

# Johnson County Community Empowerment



**Contact:**

Laurie Nash

1500 Sycamore Street  
Iowa City, IA 52240

Phone (319) 339-6179

Fax (319) 338-9139

e-mail [empower@jcempowerment.org](mailto:empower@jcempowerment.org)

website [www.jcempowerment.org](http://www.jcempowerment.org)

**Vision:** Johnson County is a safe and healthy community in which to learn, work, and live.

**Mission:** Johnson County Empowerment will lead the community in removing barriers to a safe and healthy community by: identifying needs in education, health, and human services; maintaining, expanding, and coordinating resources to address those needs; promoting and facilitating collaboration; and evaluating and continuously improving efforts to advance our vision.

The **Johnson County Empowerment Community Plan** for early childhood includes three primary components: early education, health, and parent education/family support. Priorities in each of the three primary component areas include:

**Early Education:** Improving availability, accessibility, and quality of early childhood environments outside of the home. This includes continuity of children's early education experience and stability of child care providers.

**Health:** Increasing access to quality health care for children, early identification of health concerns, increasing accessibility of health insurance for children, reducing health disparity among different populations, and providing consultation to child care providers.

**Parent Education/Family Support:** Encouraging safe, stable, nurturing home environments by providing neighborhood based services and building natural networks of support within neighborhoods. This includes community based parenting classes with the goals of increasing supportive parenting skills, enhancing parent/child relationships, and families utilizing quality early education environments.

The Board has further identified **issues with significant community impact**. These affect the entire community. The issues are 1. Limited English proficiency in schools and community; 2. Increasing minority population and cultural differences; 3. Poverty impact and limited resources to address all needs; 4. Access to health services, i.e. families either can't afford or don't qualify; 5. Impact of disabilities, especially in schools; 6. Mental health, including children and parents; 7. Substance abuse, increasing severity of use and severity of drugs; 8. Child care/preschool accessibility, affordability, availability, and quality; 9. Rural issues including isolation and service delivery.

**Local Indicators include:**

1. Rate of low birth weight births to teen mothers and teen birth rate
2. Percent of eligible children enrolled in state health insurance programs
3. Number of confirmed child abuse reports and incidence of abuse in early education settings
4. Number of Child In Need of Assistance (CINAs) and Terminations of Parental Rights (TPRs)
5. Child development home providers participating in training and improving FDCRS scores
6. Percent of kindergarten students who attended preschool
7. Percent of children who maintain or gain protective factors (DECA)
8. Number of regulated child care programs and number of regulated child care slots

Collaborations include Community Partnerships for Protecting Children, Decat, Prevent Child Abuse - Johnson County, Success By Six, and partnerships with various community agencies and organizations.

Early Childhood Funded Programs	Training stipends, 4Cs Provider Supports, Shared Visions support, Home Ties Emergency Child Care, ICCSD Shared Visions Wraparound, SCCA & Promise Jobs wraparound child care, ELL/GED child care support
School Ready Funded Programs	Continue Care, Rural and Latino Preschool Scholarships, Head Start Match, Kindergarten PREP, Family Support Program (home visiting), parenting groups and classes including playgroups and First Books, PNP teen parent home visiting, Children's Health Insurance Outreach

# Johnson County Community Empowerment



Key Identified Need/Priority: **Increasing the availability of early care and education**

Measurable Goal: **By 2003, increase to 2,275 (5% increase over baseline 2001) the number of regulated child care slots. Updated Goal: by 2008, increase to 6,109 (5% over 2003) the number of regulated child care slots.**

Why this is important: **In order for families to be able to participate in job and education opportunities, there must be safe child care available for their children. Providers who are regulated in some way (licensed centers and child development homes registered with the state or listed with local child care resource and referral) are required to meet certain health and safety requirements, thus giving a measure of quality.**

State Result Linkage: **Secure & Nurturing Child Care Environments; Safe & Supportive Communities**

Key Community Indicator(s): (Baseline and trend information)	FY 01	FY 02	FY 03	Current FY 04 and 05
Number of regulated child care slots	2164	3932	5818	5749 and 5881

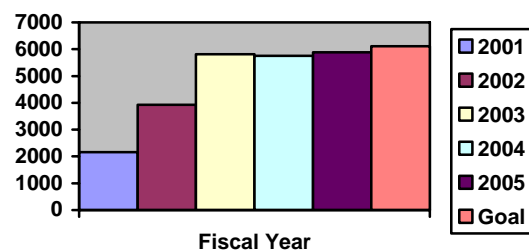
Service, Product or Activity to impact the Key Need/Priority:

Performance Measure(s) (Baseline and trend information)	FY 02	FY 03	FY 04	Current FY 05
Child care providers recruited by 4Cs	7	19	43	73
Home providers newly listed with 4Cs	51	56	49	55
Home providers 4Cs helped to register	1	9	43	54
Home providers receiving a home visit	NA	NA	55	190
Number of home visits to child care providers	NA	143	138	217

Analysis of the Data/ Factors affecting the data:

During FY04, new DHS rules regarding home providers went into place. Those rules changed the number of children unregistered providers were able to care for and added requirements for some categories of registration. Home providers often experience a sense of isolation, which can lead to frustration regarding registration requirements and the “business” aspect of child care. The Home Mentor provides technical assistance as well as support for those providers. This program is available to both new and veteran providers, to support the dual goals of recruiting and retaining home providers. HACCPN is a grass-roots, provider-driven network of home child care providers. HACCPN offers monthly support and networking meetings. In 2002, with Empowerment funding, HACCPN developed a website. The website is utilized by providers to gather information about business practices, developmentally appropriate practices, and other support and it provides a forum for parents who are looking for childcare to complete an application and connect with providers who have available child care slots.

**# of regulated child care slots**



There was some decrease during FY04 perhaps due to new DHS rules regarding home registration.

**Iowa Community Empowerment  
Annual Report, State Fiscal Year 2005  
July 1, 2004 through June 30, 2005**

Name of Community Empowerment Area: **Johnson County Community Empowerment Area**

Counties/Area Served: **Johnson County**

Website: **www.jcempowerment.org**

Current Board Chairperson:

**Charles Eastham**

Signature: \_\_\_\_\_

Address:

**37 Colwyn Court  
Iowa City, IA 52245  
eastham@mchsi.com**

Current Fiscal Agent:

**Johnson County Board of Supervisors, Mike Lehman**

Signature: \_\_\_\_\_

Address:

**Johnson County Board of Supervisors  
913 S Dubuque Street  
Iowa City, IA 52240  
mlehman@co.johnson.ia.us  
Federal ID Number: 42-6004806**

Contact Person for the Community Empowerment Area:

**Laurie Nash**

**1500 Sycamore Street**

**Iowa City, IA 52240**

Phone **(319) 339-6179**

FAX: **(319) 338-9139**

E-mail: **Empower@JCEmpowerment.org**

**SECTION I –**

**a. Current Community Empowerment Board Composition on September 15, 2005**

- A. Number of Board Members (Board Size) **23**
- B. Membership Identification. Complete the table below for members on the CEA Board

***If the board does not meet the membership representation criteria, attach the CEA board’s plan how they will meet requirements.***

<b>Column 1</b>	<b>Column 2</b>	<b>Column 3</b>	<b>Column 4</b>	<b>Column 5</b>
<b>Name</b>	<b>Representation</b>	<b>Name of Employing Organization</b>	<b>Provider of CE Services/Program</b>	<b>Citizen/Elected</b>
Chair: Charles Eastham		U of Iowa		X
Vice Chair: Alice Atkinson		U of I College of Education		X
Treasurer: Jeanne Saunders		U of I School of Social Work		X
Secretary: Lisa Haverkamp		Grant Wood AEA		X
Fiscal Agent: Sally Stutsman	<i>Required J. Co. fiscal agent</i>	J Co Bd of Supervisors		X
Joe Fleming	<i>Required human services</i>	Dept. of Human Svcs		Not Applicable
Ralph Wilmoth	<i>Required health</i>	J Co Public Health	ECS Employer	Not Applicable
Jim Behle	<i>Required education</i>	Iowa City Schools	Shared Visions, Parent Ed, FSP	Not Applicable
Carol Nordquist	<i>Required faith</i>	retired		X
Suzanne Henry	<i>Required business</i>	Private practice child psychiatry		X
Chris Harms	<i>Required consumer</i>	U of I		X
Rachel Anderson		U of I College of Public Health		X
Mary Aquilino		U of I College of Public Health		X
Tom Immermann		Retired		X
Jennifer Kindon		HACAP	Parent Ed	
Amy Knight		Homemaker		X
Brian Loring		NCJC	Wraparound Child Care, Head Start Match, FSP	
George Phillips		U of I College of Medicine		X
Justine Retz		4Cs CCR&R	Child Care Provider Services	
Mary Scamman		Kirkwood College		X
Steve Spenler		Johnson County Ambulance		X
Pete Wallace		Mercy Iowa City		X
Ross Wilburn		Crisis Center		X

**b. Organizational structure**

The Johnson County Empowerment Board

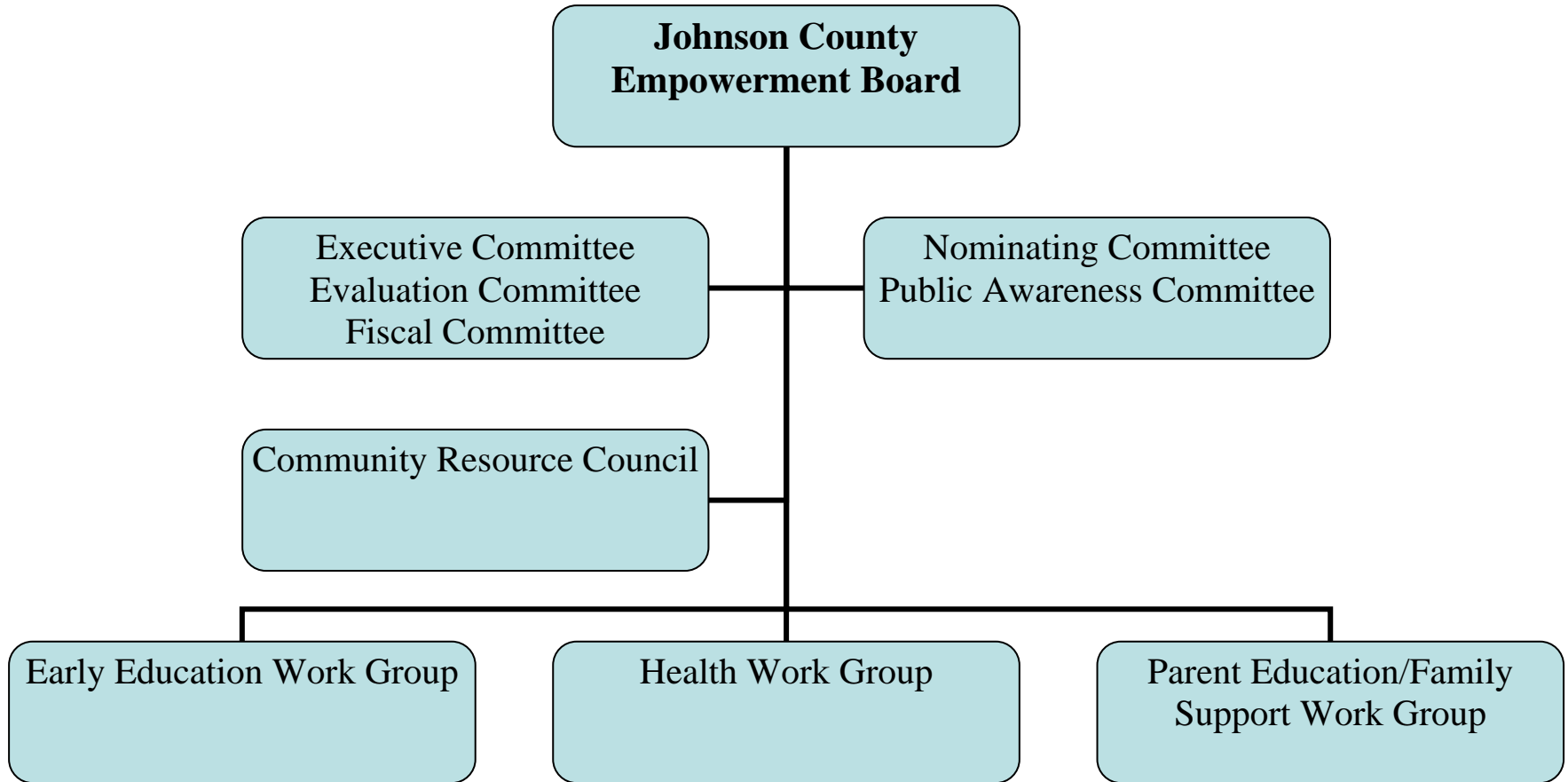
The Johnson County Community Plan for Early Childhood includes three priority areas: early education, health, and parent education/family support. Priority Area Work Groups have been established to provide guidance and consultation to the Board regarding each of the specific areas of priority. Work Groups monitor community needs and make recommendations to the Board regarding the focus of Requests For Proposals (RFPs), then review program proposals and make recommendations to the Board regarding program funding. Work Groups provide ongoing program oversight, including reviewing quarterly reports and providing technical assistance to contracting agencies in implementing programs. Work group membership is comprised of Board members and other community members.

Standing Committees have been established to further assist the Board in its functioning. Committees include Executive, Evaluation, Fiscal, Nominating, and Public Awareness. The Executive Committee is chaired by the Board Chairperson and meets monthly, with the responsibilities of setting the agenda for Board meetings, making policy recommendations to the Board, and providing supervision to the Early Childhood Specialist. The Evaluation Committee meets monthly and acts as a resource to both the Board and to contracting agencies in evaluating programs and progress towards local indicators. The main activities of the Evaluation Committee during the past year have included developing evaluation tools for the home visiting program, 4Cs provider trainings and the Continue Care program, and developing a shared evaluation tool for all parenting education programs. The Fiscal Committee is chaired by the Board Treasurer and meets quarterly to provide fiscal oversight and monitoring information to the Board. The Fiscal Committee reviews the Board's fiscal policies and makes recommendations to the Board. The Nominating Committee is chaired by the Vice Chairperson and is responsible for recruitment of new Board members. The Nominating Committee monitor's the composition of the board to ensure compliance with state legislation and local by-laws. The Public Awareness Committee is responsible for developing and distributing materials aimed at increasing public awareness of the work of the Empowerment Board and the issues related to families with children 0-5.

Johnson County Empowerment is actively involved in efforts to provide formal communication and broad coordination of all community planning efforts. Participants in this effort include Youth Development, Juvenile Crime Prevention, Decat, United Way, Johnson County Board of Supervisors, and Johnson County Council of Governments.

The Early Childhood Specialist participates in many community planning initiatives and provides a link between the work of the Board and other community groups. Activities have included the Iowa City Community Schools Early Childhood Task Force, United Way's Success By Six planning group, Prevent Child Abuse Johnson County, the Johnson County Coalition Against Domestic Violence, the Iowa City Housing Authority Program Coordinating Committee, Community Partnerships for Protecting Children, Decat planning, Youth Development, Juvenile Crime Prevention, and Community Partnerships for Protecting Children.

### Table of Organization



**SECTION II – Community Plan**

Seeking redesignation - see complete Community Plan.

**SECTION III. Indicators and Priorities from Community Plan**

Definition: Indicators are measures that indirectly quantify the achievement of a result.

**Codes for Identifying state results for Indicators:**

- A. *Healthy Children*
- B. *Secure & Nurturing Families*
- C. *Secure & Nurturing Child Care Environments*
- D. *Children Ready to Succeed in School*
- E. *Safe & Supportive Communities*

Community Indicator(s)	Identify the State Results Linked to the Indicator by A, B, C, D, E
Rate of low birth weight births to teen mothers	A
Teen birth rate	A
Number of eligible children enrolled in state health insurance programs	A
Number of confirmed child abuse reports	B
Number of Child In Need of Assistance (CINAs) and Terminations of Parental Rights (TPRs)	B
Incidence of abuse in early education settings	C
Number of child development home providers participating in training	C
Percent of child development homes that make improvement in FDCRS	C
Percent of kindergarten students who attended preschool	D
Percent of children who maintain or gain protective factors (DECA)	D
Number of regulated child care programs	E
Number of regulated child care slots	E

Based on the adopted indicators, please list the priorities identified in your community plan.

<b>Community Empowerment Area Identified Priorities:</b>
Reducing health disparity among different populations
Increasing accessibility of health insurance and quality health care for children
Early identification of health concerns
Encouraging safe, stable, nurturing home environments by providing neighborhood based services and building natural networks of support within neighborhoods
Increasing supportive parenting skills, enhancing parent/child relationships, and families utilizing quality early care and education environments through community based parenting classes
Improving availability, accessibility, and quality of early childhood environments outside of the home, including affordability, continuity of children's early education experience, and stability of child care providers

**SECTION IV – Community-Wide Indicators – CALCULATE ON THE TOTAL NUMBER OF 0-5 POPULATION IN THE CEA.**

**Definition: Indicators are measures that indirectly quantify the achievement of a result.**

**Definition: Goals are broad measurable statements of intent to set a future direction.**

Identify the Community Empowerment Area Indicators	Identify Source of data for each Indicator	Baseline Data (date & numerical value) *	Sub-Subsequent Year's Data (Trend Line)* Identify Year			Goal (numerical value & projected timeline)	Progress Update (Analysis)
			2000	2001	NA		
Rate of low birth weight births to teen mothers (birth weight >2,500 grams, per 1,000 live births)	FACITS	1999 **Rate too low to calculate (4/21)	2000 ** (1/23)	2001 ** (4/15)	NA	Less than state rate	This indicator was added during FY04. FACITS website does not provide current information. May need to review as rates consistently too low to report.
Teen birth rate (per 1,000 population 15-17 years)	FACITS	1998 9.7 (IA 22.3) 2001 8 (IA 16.6)	2002 4.3 (IA 9.1)	2003 3.4 (IA 7.5)	NA	Decrease to 4.0 by 2005 and continue less than state rate. New goal to maintain 3.5.	Slight increases in 1999 and 2000 (12.5 and 13.2) but decreased since then. Johnson County rates have remained relatively stable, and below state rates, for past 5 years.
Number of eligible children enrolled in state health insurance programs (0-17)	DHS	1999 2152 Medicaid 2000 2391 TXIX Aug. hawk-i 76	2001 121 hawk-i 2754 TXIX 2002 hawk-i 214	April 2003 hawk-i 224 April 2004 hawk-i 242 TXIX 3,665	April 2005 hawk-i 331 (45%) TXIX 3,972	Increase hawk-i enrollment to 75% of goal by 2008 (75% of goal is 547 children in FY06).	Indicator added during FY04. Received DHS funding for outreach in FY00 and Empowerment began funding staff for outreach during FY03. hawk-i began tracking stats Aug. 2000. From April 2002 to April 2005 enrollment has increased by 55%.
Number of confirmed child abuse reports (per 10,000 population) (per 1,000 age 0-17)	DHS	1998 239 (12.4 rate)	2002 224 (11.6 or 15.9; IA 17.4)	2003 312 victims; 222 confirmed reports	2004 333 victims; 210 confirmed incidents	Decrease rate to 11.75 (5%) by 2005	Difficulty in defining rates, i.e. by victim, perpetrator, report and also between confirmed and founded. 1999 238 (12.3) 2000 235 (12.2 or 11.3; IA 13.5) 2001 311 (13.94) IA 15.24
Number of CINAs and TPRs	Johnson County Attorney's Office	1998 99 CINA 19 TPR	2002 76 CINA 47 TPR	2003 91 CINA 29 TPR	2004 99 CINA 39 TPR	Decrease CINA to 95 and TPR to 17 by 2005.	The DHS redesign mandates CINA in certain circumstances where there may have been previous discretion. This may contribute to rising rates. Information is difficult to obtain. CINA and TPR have increased since 1991.

Identify the Community Empowerment Area Indicators	Identify Source of data for each Indicator	Baseline Data (date & numerical value) *	Sub-Subsequent Year's Data (Trend Line)* Identify Year			Goal (numerical value & projected timeline)	Progress Update (Analysis)
Incidence of abuse in early education settings	DHS	2001 49 reports 22 confirmed	2002 31 reports; 9 confirmed	2003 42 reports; 20 confirmed	2004 28 reports; 9 confirmed	Decrease to 20 confirmed (5%) by 2005. New goal to maintain at 20.	Have discussed eliminating this indicator as the numbers are relatively small and difficult to obtain.
Number of child development home providers participating in training (duplicate)	4Cs Child Care Resource and Referral	2001 419 providers (registered 347; non-reg 72)	2002 639 providers	2003 1075 providers (registered 935; non-reg 140)	2004 1,017 providers 2205 1,126 providers	Increase to 503 (20%) by 2005. New goal to increase to 1129 by 2007.	Numbers of training participants have increased annually. New goal added in 2005.
Percent of child development homes that make improvement in 2 areas of FDCRS	4Cs Child Care Resource and Referral	2004 100%	2005 95%	NA	NA	100% of providers will make improvements in 2 or more areas	This indicator was added during FY04. Not yet county-wide participation.
Percent of kindergarten students who attended preschool	School districts in Johnson County (Clear Creek Amana, Iowa City, Lone Tree, Solon) 1990 & 2000 - census	1990 56.5% county  00-01 LT 67%	2000 52.8% county  02-03 LT 85%	03-04 Combined 76.8%  ICCSA 75.1% LT 77.5% Solon 87.5%	04-05  ICCSA 75% LT 82%	All areas will have 75% of kindergarteners with preschool experience by 2005.	Lone Tree attendance has increased significantly, especially since implementing Empowerment scholarships in FY03 (02-03 school year). Difficulty getting numbers from other districts.
Percent of children who maintain or gain protective factors (DECA)	Early education environments	FY2004 91.2%	2005 86.11%	NA	NA	95% of children ages 2-5 will gain or maintain protective factors.	This indicator was added during FY04. So far, only 8 early education programs in Johnson County are utilizing the DECA.

Identify the Community Empowerment Area Indicators	<i>Identify Source of data for each Indicator</i>	Baseline Data (date & numerical value) *	Sub-Subsequent Year's Data (Trend Line)* Identify Year			Goal (numerical value & projected timeline)	Progress Update (Analysis)
Number of regulated child care programs	Johnson County Social Services and 4Cs Child Care Resource & Referral	2001 Homes 399	2002 4Cs non-reg 28  2003 Homes 224	2004 191 homes 87 centers	2005 181 homes 88 centers	Increase to 288 by 2008.	This indicator was added during FY04. Also during FY04 DHS changed rules regarding home registration.
Number of regulated child care slots	Johnson County Social Services and 4Cs Child Care Resource & Referral	2001 Licensed 1,403 Registered 761 Total 2,164	2002 Total Licensed & Registered 3,932 2003 Licensed 4,289 Registered 1,800 Total 6,089	2004 Licensed 4,221 Registered 1,002 (or 1,528) Total 5,223 (or 5,749)	2005 Licensed 4,433 Registered 1,448 Total 5,881	Increase to 2275 (5%) by 2003. Updated goal to increase to 6395 by 2008.	There was some decrease during FY04 perhaps due to new DHS rules regarding home registration.

\* If actual data is not available, please insert *NA* and provide an explanation in the Progress Update column.

## **SECTION V – Collaborative Efforts**

***Definition adopted by Iowa Empowerment Board: Collaboration involves parties who see different aspects of a problem. They engage in a process through which they constructively explore their differences and search for (and implement) solutions that go beyond their own limited vision of what is possible. (Gray, 1989). Relationships evolve toward commitment to the common mission, comprehensive communication and planning, pooled resources and shared risks and products. Authority is vested in the collaborative, rather than in individuals or an individual agency.***

*Describe at least two (2) successful collaborative efforts within the community empowerment area during the last year that promote healthy and successful children 0-5 and their families.*

### **Johnson County Early Learning Initiative (JCELI)**

The Johnson County Early Learning Initiative (JCELI) is the result of a partnership between Neighborhood Centers of Johnson County (NCJC) and Johnson County Empowerment in applying for a federal Early Learning Opportunities Act (ELOA) grant. NCJC identified the availability of the grant and has the organizational capacity to implement the needed programs, but the applicant for the ELOA grant must be a designated local body of government. This helped to create the partnership where Johnson County Empowerment made the official application and is the grantee, while NCJC is the fiscal agent and provides implementation of the plan.

The JCELI grant application was modeled after needs identified within the Empowerment area and services currently provided with Empowerment funding. Essentially, the JCELI program expands many of the services current in place under Empowerment funding.

The JCELI program consists of 5 main components:

1. Family Support home visitation
2. Yearn To Learn community education
3. Ready To Read First Books family education
4. Parent Education playgroups
5. Preschoolers Reaching their Educational Potential (PREP) kindergarten preparation preschool
6. Early Intervention Specialist: case management and consultation to address the needs of children with behavioral issues, developmental delays, language needs, and other learning issues at home and in the classroom
7. University of Iowa Mobile Pediatric Health Clinics
8. Early Educator training: training, curriculum and support to home-based and center-based child care providers

## **SECTION V – Collaborative Efforts - Continued**

### **Success By Six Initiative**

United Way of Johnson County, Neighborhood Centers of Johnson County (NCJC), Iowa City Community School District (ICCSD), 4Cs Child Care Resource & Referral, and Johnson County Empowerment have collaborated to begin the Success By 6 initiative.

#### **Coordination and Planning**

The Coordination and Planning component of Success By 6 will further the goal of Empowerment for a true Community Plan for Early Childhood. This process will include reviewing the current Empowerment Community Plan to be sure that the plan will fit all partners and can be used as a county-wide plan for early childhood. United Way will provide expert consultation and facilitation, while other partners will provide expertise in the area of early childhood best practices and community needs.

#### **Public Awareness & Parent Education: Born Learning campaign**

The Public Awareness & Parent Education component of Success By 6 will address one of the Empowerment goals that until now has received little attention, due to lack of funding. NCJC, ICCSD, 4Cs, and Empowerment will work together to identify what we want our message to be. United Way will provide a marketing/communications consultant and staff support in developing and disseminating the common message.

**SECTION VI – Performance Measures: Community Empowerment Early Childhood Funds**

- Input** - what has been invested in financial and non-financial resources? (dollars invested, number of staff, etc)
- Output** - what was produced or changed as an effect of the effort put forth? (number served or trained, number of events, number meeting program outcome, etc)
- Quality** - How qualified and efficiently was the activity or service delivered? (percent of qualified staff, percent of customers satisfied, cost or rate per unit, ratio of staff to children, etc)
- Outcome** - What was the change in conditions for the people served? (percent meeting the outcome, percent gaining knowledge, percent making change in condition, etc)

**All columns should have quantitative or numerical data.**

Early Childhood Services Provided (Coincide w/ Budget Line Items)	How Much Was Invested? <b>(Input Measures)</b>	How Much Was Done or Produced? <b>(Output Measures)</b>	How Well Did We Do It? <b>(Quality/ Efficiency Measures)</b>	What Was the Change In Conditions for Those We Served? <b>(Outcome Measures)</b>
Early Education Quality Supports	\$31,925.03 Empowerment funds \$59,600.64 other funds  Early Learning Opportunities Act Grant	-217 home visits -188 classes offered -1126 home providers participated in trainings	-190 providers received individualized support -1126 home providers participated in trainings -2 centers and 4 child development homes participated in training stipends	-10 providers attended 6 state and regional trainings wouldn't otherwise attend <b>-11% increase</b> in home providers attending trainings <b>-95%</b> of participants made gains in 2 or more areas of the FDCRS
Early Education Accessibility/Scholarships	\$73,636.20 Empowerment funds \$75,000 Johnson County \$34,220.44 SCCA/Family fees \$11,319.51 CACFP \$59,047.33 Other including Even Start	-84 children from 71 families received emergency child care -total of 131 children served	-average cost per child served at Home Ties \$1,898.87 -27 children were assessed with the DECA -13 children were assessed twice with DECA -5 referrals to Children's Health Insurance Outreach Coordinator HT -43 children screened with Ages & Stages Questionnaires (ASQ)	<b>-77%</b> of children gained Total Protective Factors as measured on DECA -8 children referred for further evaluation based on ASQ -6 children received specialized services as result of ASQ referral and 3 are on IFSPs
Early Education Wraparound Grants	\$57,622.34 Empowerment funds \$157,803.84 other funds (Shared Visions, etc)	-113 children received wraparound support to participate full-day and/or full-year	-26 children assessed at least once with the DECA -17 children were assessed twice with the DECA -23 children were screened with Ages & Stages Questionnaires	-4 children were referred to AEA as a result of ASQ screening; 2 are currently on IFSPs <b>-100%</b> of children gained Total Protective Factors as measured by the DECA

**SECTION VI – Performance Measures: Community Empowerment Early Childhood Funds - CONTINUED**

Early Childhood Services Provided (Coincide w/ Budget Line Items)	How Much Was Invested? <b>(Input Measures)</b>	How Much Was Done or Produced? <b>(Output Measures)</b>	How Well Did We Do It? <b>(Quality/ Efficiency Measures)</b>	What Was the Change In Conditions for Those We Served? <b>(Outcome Measures)</b>
Program Expense & Evaluation	\$689.49 Empowerment	-8 Bright Futures Health Guides -Small Wonders video -ASQ video -books for DECA evaluation	- <b>100%</b> of training participants agreed that the hand-outs and audio-visual materials were useful and enhanced the information presented.	-training participants had the opportunity to see evaluation tools being implemented with children to enhance their use of the tools -direct service staff have additional resource materials available for their use
Early Childhood Specialist	\$6,975 Empowerment	-5 presentations to child care professionals (76 participants)	- <b>100%</b> of Ages & Stages Questionnaires (ASQ) and Ages & Stages: Social-Emotional (ASQ:SE) training participants received appropriate and adequate information to administer, score, and interpret the ASQ and ASQ:SE. - <b>100%</b> of ASQ training participants have strategies for encouraging child participation in the ASQ, - <b>100%</b> of ASQ and ASQ:SE training participants have ideas about how to talk to parents about the screening tool and their child's development.	-more child care programs are utilizing the Ages & Stages Questionnaires screening tools -availability of a quantitative measurement tool to evaluate effectiveness of provider trainings

**SECTION VII – Performance Measures: Community Empowerment School Ready funds**

**All columns should have quantitative or numerical data.**

School Ready Services Provided (Coincide w/ Budget Line Items)	How Much Was Invested? <b>(Input Measures)</b>	How Much Was Done or Produced? <b>(Output Measures)</b>	How Well Did We Do It? <b>(Quality/ Efficiency Measures)</b>	What Was the Change In Conditions for Those We Served? <b>(Outcome Measures)</b>
Family Support Program (home visiting)	\$198,470 Empowerment  Early Learning Opportunities Act Grant	-2356 home visits provided to 165 unduplicated families -236 children 0-5 -47 pregnant women	\$1,203 per family \$84.20 per visit Additional 25 families with 7 pregnant women and 31 children served through ELOA Grant Counselor effectiveness received <b>100%</b> satisfaction rating	<b>98%</b> of participants know more what to expect of their child at his/her age <b>99%</b> of participants know more about where to turn for help <b>99%</b> of participants feel more confident about their parenting skills <b>98%</b> of participants have more ideas about how to discipline their child <b>97%</b> of participants are more likely to use positive discipline with their child; of those <b>80%</b> are a lot more likely
Parent Education/Family Support	\$50,016.65 Empowerment \$96,356.25 other funding (Shared Visions, Even Start, etc)  Early Learning Opportunities Act Grant	-220 unduplicated families participated in parent group activities -1170 duplicated parent contacts were made	-370 surveys completed, of 546 eligible to complete -Presenter effectiveness received <b>100%</b> satisfaction rating (based on 356 surveys)	- <b>100%</b> of respondents know more about how children grow and develop - <b>100%</b> of respondents know more ways to improve their child's early and pre-reading skills - <b>100%</b> of respondents are more likely to follow a schedule with their children - <b>100%</b> of respondents know more what to expect of their child at his/her age - <b>100%</b> of respondents will use class activities at home - <b>100%</b> of respondents are more likely to have their child immunized on time

**SECTION VII – Performance Measures: Community Empowerment School Ready funds - CONTINUED**

School Ready Services Provided (Coincide w/ Budget Line Items)	How Much Was Invested? (Input Measures)	How Much Was Done or Produced? (Output Measures)	How Well Did We Do It? (Quality/ Efficiency Measures)	What Was the Change In Conditions for Those We Served? (Outcome Measures)
Early Education Supports	\$97,955.38 Empowerment \$31,758 Head Start funding \$1,010 family tuition \$5,990 other funds \$8,468 DHS in-kind	-58 kids utilized Continue Care -19 students on scholarship to Little Engine -6 participated in Head Start Match -13 children received intensive summer school preparation	-8 children used Little Engine scholarships all year, 4 children used for only one month; average use 5.26 months -6 children were assessed twice with the DECA; 19 children received at least one DECA assessment -18 children were screened with the Ages & Stages Questionnaires	- 67% of children increased their Total Protective Factors as measured by DECA -78% of Continue Care recipients remained with their current care provider after funding ended; 68% were still there 3 months later -6 additional children were able to access full-time Head Start 82% of Lone Tree kindergarteners attended Little Engine preschool -19 rural students w/o Head Start access had access to preschool
Health Services	\$23,253.45 Empowerment  \$18,899.76 other funds (state hawk-i outreach, federal Transitional Living Program grant)	-193 PNP visits to 14 pregnant/parenting teens and 23 of their children -60 families assisted in applying for hawk-i	From April 2002 to April 2005 hawk-i enrollment has <b>increased 55%</b>	-14% low birth weight births to teen mom participants (1 out of 7, that mom refused prenatal care) -117 more children have been enrolled in hawk-i since funding the Children's Health Insurance Outreach Coordinator

**SECTION VII – Performance Measures: Community Empowerment School Ready funds - CONTINUED**

School Ready Services Provided (Coincide w/ Budget Line Items)	How Much Was Invested? (Input Measures)	How Much Was Done or Produced? (Output Measures)	How Well Did We Do It? (Quality/ Efficiency Measures)	What Was the Change In Conditions for Those We Served? (Outcome Measures)
Program expense & evaluation	\$1,845.18 Empowerment	<ul style="list-style-type: none"> <li>-20Bright Futures Guides</li> <li>-7Bright Futures Health Guides</li> <li>-LearninGames Curricula</li> <li>-Baby Basics/Hola Bebe</li> <li>-materials for 25 for Nest presentation</li> <li>-Early Literacy Promotion</li> <li>-ASQ:SE User's Guides for FSP</li> <li>-ASQ:SE Spanish</li> <li>-ASQ Learning Activities CD-ROM</li> </ul>	<p><b>-100%</b> of training participants agreed that the hand-outs and audio-visual materials were useful and enhanced the information presented.</p>	<ul style="list-style-type: none"> <li>-early literacy information to 500 families (bookmarks)</li> <li>-171 books distributed to children</li> <li>-training participants had the opportunity to see evaluation tools being implemented with children to enhance their understanding of the use of the tools</li> <li>-direct service staff have additional resource materials available for their use</li> </ul>
Early Childhood Specialist	\$11,625.00 Empowerment	<ul style="list-style-type: none"> <li>-5 trainings for home visiting staff (29 participants)</li> <li>-3 presentations to families (55 participants)</li> <li>-2 trainings for public health staff (27 participants)</li> </ul>	<p><b>-100%</b> of Ages &amp; Stages Questionnaires (ASQ) and Ages &amp; Stages: Social-Emotional (ASQ:SE) training participants received appropriate and adequate information to administer, score, and interpret the ASQ and ASQ:SE.</p> <p><b>-100%</b> of ASQ training participants have strategies for encouraging child participation in the ASQ,</p>	<p><b>-100%</b> of ASQ and ASQ:SE training participants have ideas about how to talk to parents about the screening tool and their child's development.</p> <ul style="list-style-type: none"> <li>-broader use of Ages &amp; Stages Questionnaires and Ages &amp; Stages: Social-Emotional screening tools for detecting early developmental concerns</li> <li>-development of a consistent and quantitative measurement tool to measure effectiveness of Parent Education programs</li> </ul>

**SECTION VIII –Other Community Investment and Support**

Identify and briefly describe other funding or support (as appropriate) the community empowerment area has been successful in obtaining and applying toward the community plan. *Identify funds (actual cash amount) that come directly to and flow through the community empowerment area to support the community plan. Identify value of in-kind as calculated according to usual and customary accounting principles (convert to cash value) that supports the community empowerment area’s community plan.*

<b>Source</b>	<b>Cash Value</b>	<b>Source</b>	<b>In-Kind Cash Value</b>
Early Learning Opportunities Act Grant	171,175.00	Johnson County Board of Supervisors	1232.00
Johnson County	75,000.00	Mercy Hospital Iowa City	1746.81
Public Health hawk-i outreach	9,149.46	4Cs Community Coordinated Child Care	1,200.00
Prevent Child Abuse Iowa	10,999.98	Johnson County Council of Governments	356.79
DHS Wraparound grants	59,990.00	Johnson County Social Services	8,468.00
Shared Visions grants	135,131.84	Johnson County Public Health	2,185.82
		Community volunteers	19,305.00
		<b>Board Chairperson</b>	1,620.00
<b>TOTAL</b>	<b>\$461,446.28</b>	<b>TOTAL</b>	<b>\$36,114.42</b>

**As a result of an internal audit conducted FY05, some budget figures have been revised.**

Iowa Community Empowerment Annual Report, Fiscal Year 2005  
Early Childhood Financial Statement

	FY 02	FY 03	FY 04	FY 05
<b>Revenues</b>				
Community Empowerment Grant Award	\$130,847.00	\$125,838.00	\$161,216.00	\$171,237.00
Administration (not to exceed 5% of grant award)	\$6,542.00	\$6,291.00	\$8,060.00	\$8,561.00
Brought Forward - Admin. Funds (from previous year)	\$1,891.14	\$213.89	\$72.49	\$2.02
<i>Total Administration Budget</i>	\$8,433.14	\$6,504.89	\$8,132.49	\$8,563.02
Program/Service Funds	\$124,305.00	\$119,547.00	\$153,156.00	\$162,676.00
Interest	\$4,927.00	\$1,456.00	\$512.00	\$1,087.92
Brought Forward -- Program/Service Funds (from previous year)	\$103,495.44	\$120,792.56	\$29,588.09	\$10,738.92
<i>Total Program/Service Budget</i>	\$232,727.44	\$241,795.56	\$183,256.09	\$174,502.84
<b>Expenditures</b>				
Administration (Line Items)				
1. Board Expenses	\$380.87	\$1,583.96	\$350.00	\$0.00
2. Staff Office Expenses	\$2,808.68	\$1,156.44	\$2,580.47	\$3,137.57
3. Administrative Staff	\$5,029.70	\$3,692.00	\$5,200.00	\$5,425.45
<i>Total Administrative Expenses</i>	\$8,219.25	\$6,432.40	\$8,130.47	\$8,563.02
Program/Service (Line Items)				
1. Early Education Quality Supports	\$0.00	\$13,625.80	\$4,958.10	\$31,925.03
2. Early Education Availability and Retention	\$40,000.00	\$67,068.60	\$50,393.75	\$0.00
3. Early Education Accessibility/Scholarships	\$0.00	\$30,550.00	\$52,777.39	\$73,636.20
4. Early Education Wraparound Grants	\$53,262.00	\$76,904.46	\$56,492.98	\$57,622.34
5. Program expense and evaluation	\$484.88	\$5,324.61	\$2,894.95	\$689.49
6. Early Childhood Specialist	\$18,188.00	\$18,734.00	\$5,000.00	\$6,975.00
<i>Total Program/Service Expenses</i>	\$111,934.88	\$212,207.47	\$172,517.17	\$170,848.06
<b>Total Expended</b>	\$120,154.13	\$218,639.87	\$180,647.64	\$179,411.08
Carry Forward Admin. Funds	\$213.89	\$72.49	\$2.02	\$0.00
Carry Forward Program/Service Funds	\$120,792.56	\$29,588.09	\$10,738.92	\$3,654.78

Iowa Community Empowerment 2005 Annual Report -  
School Ready Financial Statement

	FY 02	FY 03	FY04	FY 05
<b>Revenues</b>				
Community Empowerment Grant Award	\$278,915.00	\$256,612.00	\$323,122.30	\$340,492.00
Administration (not to exceed 3% of grant award)	\$8,367.00	\$7,698.00	\$9,693.00	\$10,214.00
Brought Forward - Admin. Funds (from previous year)	\$9,703.78	\$9,515.81	\$1,894.66	\$0.64
<i>Total Administration Budget</i>	\$18,070.78	\$17,213.81	\$11,587.66	\$10,214.64
Program/Service Funds	\$270,548.00	\$248,914.00	\$313,429.30	\$330,278.00
Interest	\$14,075.00	\$5,133.00	\$1,791.00	\$3,667.07
Brought Forward -- Program/Service Funds (from previous year)	\$312,379.81	\$349,846.23	\$169,493.90	\$99,006.02
<i>Total Program/Service Budget</i>	\$597,002.81	\$603,893.23	\$484,714.20	\$432,951.09
<b>Expenditures</b>				
Administration (Line Items)				
1. Board Expenses	\$350.00	\$893.61	\$972.79	\$2,511.15
2. Staff Office Expenses	\$150.94	\$2,750.61	\$1,652.23	\$999.44
3. Administrative Staff	\$8,054.03	\$11,674.93	\$8,962.00	\$6,704.05
<i>Total Administrative Expenses</i>	\$8,554.97	\$15,319.15	\$11,587.02	\$10,214.64
Program/Service (Line Items)				
1. Family Support Program	\$113,966.86	\$182,403.31	\$175,363.73	\$198,470.00
2. Parent Education/Family Support	\$40,148.00	\$81,093.86	\$37,956.33	\$50,016.65
3. Early Education Supports	\$72,428.65	\$127,012.39	\$147,344.40	\$97,955.38
4. Health Services	\$0.00	\$22,408.05	\$17,946.17	\$21,600.00
5. Program expense and evaluation	\$2,425.07	\$2,747.72	\$2,597.55	\$1,845.18
6. Early Childhood Specialist	\$18,188.00	\$18,734.00	\$4,500.00	\$11,625.00
<i>Total Program/Service Expenses</i>	\$247,156.58	\$434,399.33	\$385,708.18	\$381,512.21
<b>Total Expended</b>	\$255,711.55	\$449,718.48	\$397,295.20	\$391,726.85
Carry Forward Admin. Funds	\$9,515.81	\$1,894.66	\$0.64	\$0.00
Carry Forward Program/Service Funds	\$349,846.23	\$169,493.90	\$99,006.02	\$51,438.88