



Johnson County Empowerment



JOHNSON COUNTY

Contact for Area:

Laurie Nash
1150 5th Street, Suite 261
Coralville, IA 52241

Phone (319) 339-6179
Fax (319) 339-7337

e-mail Empower@JCEmpowerment.org
website www.jcempowerment.org

Vision: Johnson County is a safe and healthy community in which to learn, work, and live.

Mission: Johnson County Empowerment will lead the community in removing barriers to a safe and healthy community by: identifying needs in education, health, and human services; maintaining, expanding, and coordinating resources to address those needs; promoting and facilitating collaboration; and evaluating and continuously improving efforts to advance our vision.

The **Johnson County Empowerment Community Plan** for early childhood includes three primary components: early education, health, and parent education/family support. Priorities in each of the three primary component areas include:

Early Education: Improving availability, accessibility, affordability, and quality of early childhood environments outside of the home.

Health: Increasing access to health services and health insurance for children, i.e. families either can't afford or don't qualify. Early identification of health concerns, reducing health disparity among different populations, and providing consultation to child care providers.

Parent Education/Family Support: Encouraging safe, stable, nurturing home environments by providing neighborhood based services and building natural networks of support within neighborhoods. This includes community based parenting classes with the goals of increasing supportive parenting skills, enhancing parent/child relationships, and families utilizing quality early education environments.

The Board has further identified **issues with significant community impact**. These affect the entire community. The issues are **1.** Limited English proficiency; **2.** Increasing minority population and cultural differences; **3.** Poverty impact and limited resources to address all needs; **4.** Impact of disabilities; **5.** Mental health, including children and parents; **6.** Substance abuse, increasing severity of use and severity of drugs; **7.** Rural issues including isolation and service delivery.

Local Indicators include:

1. Rate of low birth weight births to teen mothers and teen birth rate
2. Percent of eligible children enrolled in state health insurance programs
3. Number of confirmed child abuse reports and incidence of abuse in early education settings
4. Number of Child In Need of Assistance (CINAs) and Terminations of Parental Rights (TPRs)
5. Child development home providers participating in training and improving FDCRS scores
6. Percent of kindergarten students who attended preschool
7. Percent of children who maintain or gain protective factors (DECA)
8. Number of regulated child care programs and number of regulated child care slots

How we are collaborating to impact the priorities:

Collaborations include Community Partnerships for Protecting Children, Decat, Prevent Child Abuse - Johnson County, Success By Six, and partnerships with various community agencies and organizations.

Identify services/programs funded by Community Empowerment:

Early Childhood Fund	Early Educator Training, Training Stipends, and other supports; Home Ties Emergency Child Care, State Child Care Assistance & Promise Jobs Wraparound; ELL/GED child care support
School Ready Fund	Shared Visions Preschool and Wraparound, Head Start Match, Kindergarten PREP, Family Support Program (home visiting), parenting groups and classes including playgroups, Family Books, PNP home visiting, Children's Health Insurance Outreach



Johnson County Empowerment



Key Identified Need/Priority: Increase the quality of early childhood environments outside of the home

Measurable Goal: Number of child development home providers participating in training
Percent of child development homes that make improvements in 2 areas of the FDCRS

Why this important: Studies support that early education providers who participate in training related to early childhood provide care that is of a higher quality. Children who participate in high quality early education experience greater development and school success than children who participate in lower quality early education.

State Result Linkage: Secure & Nurturing Child Care Environments

Key Community Indicator(s): (Baseline and trend information)	FY 2001	FY 2003	FY 2005	Current FY 2006
# of child development home providers in training	419	1,075	1,126	1,111
# of registered child development homes	399	224	181	176

Service, Product or Activity to impact the Key Need/Priority:

Performance Measure(s) (Baseline and trend information)	FY 2003	FY 2004	FY 2005	Current FY 2006
%of child development homes improving in FDCRS	NA	100	95	100

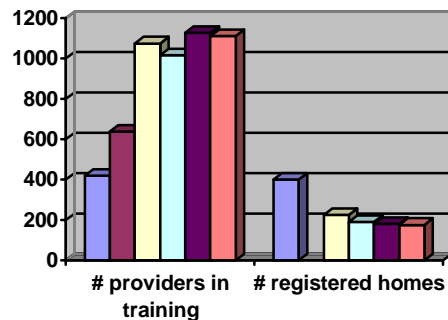
Analysis of the Data/ Factors affecting the data:

Registration of child development home providers is voluntary in the state of Iowa. This means that, for providers caring for less than 6 children, there are no requirements for the environment, the curriculum, or the provider. Unregistered providers are not required to participate in any sort of training or education or hold any specific certification. In FY 2004, new DHS rules regarding home providers went into place further specifying continuing education requirements for registered providers. In many rural areas, home based care is the only available option.

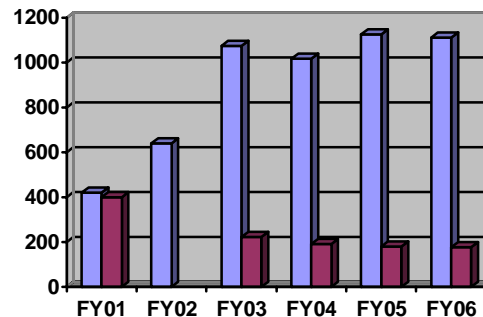
In Johnson County, as the number of registered child development homes has decreased, the number of child development home providers participating in training has increased.

Johnson County Empowerment has contracted with 4Cs Child Care Resource & Referral to provide increasing funds into the area of provider education each year. By providing a greater “menu” of training choices, having trainings that are geared specifically for home providers, and being responsive to the emerging needs expressed by home providers, the numbers of home providers participating has grown. This provides an avenue for Johnson County to create more high quality early education environments in which children may participate.

Number of child development home providers participating in training compared to the number of registered child development homes



Legend: ■ FY01 ■ FY02 ■ FY03 ■ FY04 ■ FY05 ■ FY06



Legend: ■ # providers in training ■ # registered homes

**Iowa Community Empowerment
Annual Report, State Fiscal Year 2006
July 1, 2005 through June 30, 2006**

INSTRUCTIONS

1. Please submit the following information utilizing the format provided. Additional pages and information may be included.
2. The annual report is due September 15, 2006.
3. A completed and signed original report should be submitted to the following address **electronically** to the following email:
Iowa Empowerment Board
Attn: Shanell Wagler
Office of Empowerment, Department of Management
Room 12, Ground Floor
State Capitol Building
Des Moines, IA 50319
Shanell.wagler@iowa.gov

Date This Report Approved By Local CEA Board: September 7, 2006

Name of Community Empowerment Area: JOHNSON COUNTY EMPOWERMENT

Counties/Area Served: JOHNSON COUNTY

Website: www.jcempowerment.org

Current Board Chairperson: Alice Atkinson

Current Fiscal Agent: Mike Lehman

Signature: _____
Address: 1150 5th Street, Suite 261
Coralville, IA 52241

Signature: _____
Address: Johnson County Board of Supervisors
913 S Dubuque Street
Iowa City, IA 52240

Email: amatkinson@mchsi.com

Email: mlehman@co.johnson.ia.us
Federal ID Number: 42-6004806

Contact Person for the Community Empowerment Area:
Laurie Nash Phone (319) 339-6179
1150 5th Street, Suite 261 Fax (319) 339-7337
Coralville, IA 52241

e-mail Empower@JCEmpowerment.org

SECTION I –

a. Current Community Empowerment Board Composition on September 15, 2006

A. Number of Board Members (Board Size) **27**

B. Membership Identification. Complete the table below for members on the CEA Board

Column 1	Column 2	Column 3	Column 4	Column 5
Name	Representation	Name of Employing Organization	Provider of CE Services/Program	Citizen/Elected
Chair: Alice Atkinson		U of Iowa College of Education		X
Vice Chair: Lisa Haverkamp		Grant Wood AEA	Professional Development, CART-JC	
Treasurer: Jeanne Saunders		U of Iowa School of Social Work		X
Secretary: Carol Nordquist	<i>Required faith</i>			X
Fiscal Agent: Mike Lehman		Johnson County Board of Supervisors		X
Joe Fleming	<i>Required human services</i>	DHS		NA
Ralph Wilmoth	<i>Required health</i>	Johnson County Public Health		NA
Jim Behle	<i>Required education</i>	Iowa City Community Schools	Shared Visions Preschools, Family Support Program (FSP), Rural Parenting, Mann Scholarships	Not Applicable (NA)
Suzanne Henry	<i>Required business</i>	Child Psychiatrist		X
Sara Baird	<i>Required consumer</i>	University of Iowa Libraries		X
Mary Aquilino		U of I College of Public Health		X
Regenia Bailey		Consultant		X
Nancy Chown		HACAP	HACAP Parent Education, Head Start	
Jill Dodds		Child Development Home Provider		X
Tom Immermann		Retired		X
LaDonna Johnson		Child Development Home Provider	Continue Care	
Jennifer Kindon		HACAP	HACAP Parent Education, Head Start	
Amy Knight-Charles		Homemaker		X
Brian Loring		NCJC	FSP, PREP, Early Education Supports, ELL/GED, Latino Family Support	
Martie Olson		4Cs Community Coordinated Child Care	Provider Supports, QRS Program, Home Ties	
Brenda Parker		Clear Creek Community Schools		X
George Phillips		Children's Hospital of Iowa		X
April Roe		Mercy Hospital Iowa City		X
Mary Scamman		Volunteer		X
Stephen Trefz		Mid-Eastern Iowa Community Mental Health Center		
Phyllis Tucker		Iowa City Community Schools	Shared Visions Preschools, FSP, Rural Parenting, Mann Scholarships	
Sally Weyer		Bergan & Weyer, L.L.P.		X

b. Organizational structure – please describe your structure and how the board functions, communicates, plans and interacts within the community.

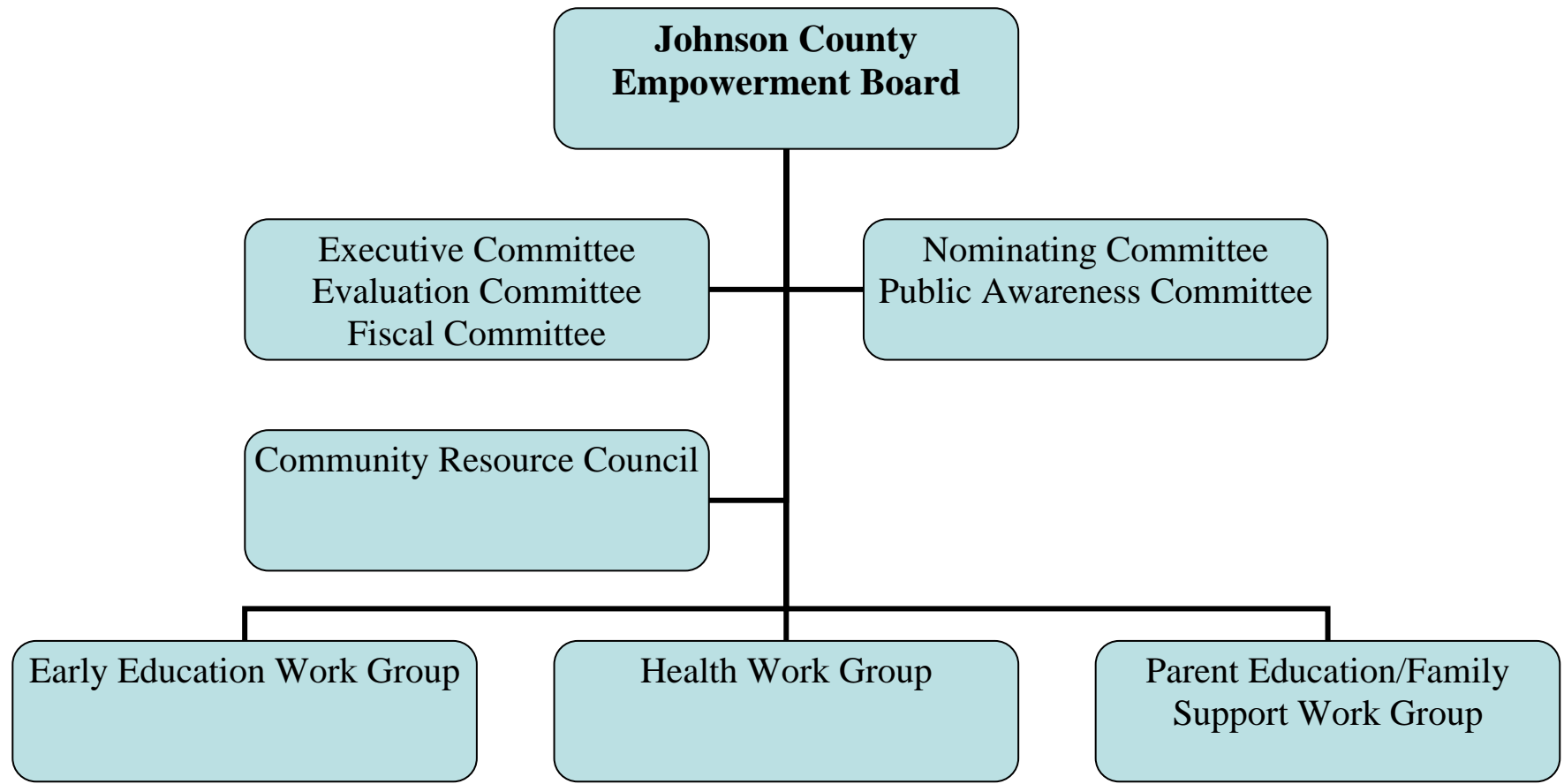
The Johnson County Empowerment Board

The Johnson County Community Plan for Early Childhood includes three priority areas: early education, health, and parent education/family support. Priority Area Work Groups have been established to provide guidance and consultation to the Board regarding each of the specific areas of priority. Work Groups monitor community needs and make recommendations to the Board regarding the focus of Requests For Proposals (RFPs), then review program proposals and make recommendations to the Board regarding program funding. Work Groups provide ongoing program oversight, including reviewing quarterly reports and providing technical assistance to contracting agencies in implementing programs. Work group membership is comprised of Board members and other community members.

Standing Committees have been established to further assist the Board in its functioning. Committees include Executive, Evaluation, Fiscal, Nominating, and Public Awareness. The Executive Committee is chaired by the Board Chairperson and meets monthly, with the responsibilities of setting the agenda for Board meetings, making policy recommendations to the Board, and providing supervision to the Early Childhood Specialist. The Evaluation Committee meets monthly and acts as a resource to both the Board and to contracting agencies in evaluating programs and progress towards local indicators. The Fiscal Committee is chaired by the Board Treasurer and meets quarterly to provide fiscal oversight and monitoring information to the Board. The Fiscal Committee reviews the Board's fiscal policies and makes recommendations to the Board. The Nominating Committee is chaired by the Vice Chairperson and is responsible for recruitment of new Board members. The Nominating Committee monitors the composition of the board to ensure compliance with state legislation and local by-laws. The Public Awareness Committee is responsible for developing and distributing materials aimed at increasing public awareness of the work of the Empowerment Board and the issues related to families with children 0-5.

Johnson County Empowerment is actively involved in efforts to provide formal communication and broad coordination of all community planning efforts. Participants in this effort include Youth Development, Juvenile Crime Prevention, Decat, United Way, Johnson County Board of Supervisors, and Johnson County Council of Governments.

The Early Childhood Specialist participates in many community planning initiatives and provides a link between the work of the Board and other community groups. Activities have included the Iowa City Community Schools Early Childhood Task Force, United Way's Starting Smart planning group, Prevent Child Abuse Johnson County, the Johnson County Coalition Against Domestic Violence, the Iowa City Housing Authority Program Coordinating Committee, Community Partnerships for Protecting Children, Decat planning, the Drug-Free Communities grant, and Youth Development.



SECTION II – Community Plan

Provide a brief list or narrative of changes, *deletions, or revisions*, if any, to the community plan.

The Community Plan has not changed since this area was redesignated in 2005.

SECTION III. Indicators and Priorities from Community Plan

Identify the indicators as determined by the CEA Board. Also include how the indicators are linked to the State Results.

Definition: Indicators are measures that indirectly quantify the achievement of a result.

Codes for Identifying state results for Indicators:

- A. *Healthy Children*
- B. *Secure & Nurturing Families*
- C. *Secure & Nurturing Child Care Environments*
- D. *Children Ready to Succeed in School*
- E. *Safe & Supportive Communities*

Community Indicator(s)	Identify the State Results Linked to the Indicator by A, B, C, D, E
Rate of low birth weight births to teen mothers	A
Teen birth rate	A
Number of eligible children enrolled in state health insurance programs	A
Number of confirmed child abuse reports	B
Number of Child In Need of Assistance (CINAs) and Terminations of Parental Rights (TPRs)	B
Incidence of abuse in early education settings	C
Number of child development home providers participating in training	C
Percent of child development homes that make improvement in FDCRS	C
Percent of kindergarten students who attend preschool	D
Percent of children who maintain or gain protective factors (DECA)	D
Number of regulated child care programs	E
Number of regulated child care slots	E

Based on the adopted indicators, please list the priorities identified in your community plan.

Community Empowerment Area Identified Priorities:
Reducing health disparity among different populations
Increasing accessibility of health insurance and quality health care for children

Early identification of health concerns
Encouraging safe, stable, nurturing home environments by providing neighborhood based services and building natural networks of support within neighborhoods
Increasing supportive parenting skills, enhancing parent/child relationships, and families utilizing quality early care and education environments through community based parenting classes
Improving availability, accessibility, and quality of early childhood environments outside of the home, including affordability, continuity of children's early education experience, and stability of child care providers

SECTION IV – Community-Wide Indicators – CALCULATE ON THE TOTAL NUMBER OF 0-5 POPULATION IN THE CEA.

Definition: Indicators are measures that indirectly quantify the achievement of a result.

Definition: Goals are broad measurable statements of intent to set a future direction.

Identify the Community Empowerment Area Indicators	Identify Source of data for each Indicator	Baseline Data (date & numerical value) *	Sub-Subsequent Year's Data (Trend Line)* Identify Year			Goal (numerical value & projected timeline)	Progress Update (Analysis)
			2000	2001	2005		
Rate of low birth weight births to teen mothers (birth weight >2500 grams, per 1,000 live births)	FACITS	1999 *** Rate too low to calculate (4/21)	2000 *** (1/23)	2001 *** (4/15)	NA	Less than state rate	This indicator was added during FY04. FACITS website does not provide current information. Need to review as rates consistently too low to report and information is out of date.
Teen birth rate (per 1,000 population 15-17 years)	FACITS	1998 9.7 (IA 22.3) 2001 8 (IA 16.6)	2002 4.3 (IA 9.1)	2003 3.4 (IA 7.5)	NA	Decrease to 4.0 by 2005 and continue less than state rate. New goal to maintain 3.5.	Slight increases in 1999 and 2000 (12.5 and 13.2) but decrease since then. Johnson County rates have remained relatively stable, and below state rates, for past 5 years.
Number of eligible children enrolled in state health insurance programs (0-17)	DHS	1999 2152 TXIX 2000 2391 TXIX Aug. hawk-i 76	2001 2754 TXIX 121 hawk-i 2002 214 hawk-i	2003 224 hawk-i 2004 3,665 TXIX 242 hawk-i	2005 3,972 TXIX 331 hawk-i (45%) 2006 4,279 TXIX 330 hawk-i (45%)	Increase hawk-i enrollment to 75% of goal by 2008 (75% of goal is 547 children in FY06).	Received DHS funding for outreach in FY00 and Empowerment began funding staff for outreach during FY03. hawk-i began tracking stats Aug. 2000. From April 2002 to April 2006 enrollment has increased by 54%. While additional children continue to be enrolled, we struggle with an almost equal number being disenrolled monthly

**SECTION IV – Community-Wide Indicators – CALCULATE ON THE TOTAL NUMBER OF 0-5 POPULATION IN THE CEA.
CONTINUED**

Identify the Community Empowerment Area Indicators	Identify Source of data for each Indicator	Baseline Data (date & numerical value) *	Sub-Subsequent Year's Data (Trend Line)* Identify Year			Goal (numerical value & projected timeline)	Progress Update (Analysis)
Number of confirmed child abuse reports (per 10,000 population) (per 1,000 age 0-17)	DHS	1998 239 (12.4 rate)	2002 224 (11.6 or 15.9; IA 17.4)	2003 – victims 312; confirmed reports 222 2004 – victims 333; confirmed incidents 210	2005 victims 346; confirmed incidents 216	Decrease rate to 11.75 (5%) by 2005	Difficulty in defining rates, i.e. by victim, perpetrator, report and also between confirmed and founded. 1999 238 (12.3) 2000 235 (12.2 or 11.3; IA 13.5) 2001 311 (13.94) IA 15.24
Number of CINAs and TPRs	Johnson County Attorney's Office	1998 99 CINA 19 TPR	2002 76 CINA 47 TPR	2003 91 CINA 29 TPR	2004 99 CINA 39 TPR 2005 154 CINA 24 TPR	Decrease CINA to 95 and TPR to 17 by 2005.	The DHS redesign mandates CINA in certain circumstances where there may have been previous discretion. This may contribute to rising rates. Information is difficult to obtain. CINA and TPR have increased since 1991.
Incidence of abuse in early education settings	DHS	2001 49 reports 22 confirmed	2002 31 reports 9 confirmed	2003 42 reports 20 confirmed	2004 28 reports 9 confirmed 2005 45 reports 14 confirmed	Decrease to 20 confirmed by 2005. New goal to maintain at 20.	Have discussed eliminating this indicator as the numbers are relatively small and difficult to obtain.

**SECTION IV – Community-Wide Indicators – CALCULATE ON THE TOTAL NUMBER OF 0-5 POPULATION IN THE CEA.
CONTINUED**

Identify the Community Empowerment Area Indicators	Identify Source of data for each Indicator	Baseline Data (date & numerical value) *	Sub-Subsequent Year's Data (Trend Line)* Identify Year			Goal (numerical value & projected timeline)	Progress Update (Analysis)
			2002	2003	2004		
Number of child development home providers participating in training	4Cs Child Care Resource & Referral	2001 419 providers (registered 347; non-registered 72)	2002 639 providers	2003 1,075 providers (registered 935; non-registered 140)	2004 1,017 providers 2005 1,126 providers 2006 1,111 providers	Increase to 503 (20%) by 2005. New goal to increase to 1,129 by 2007.	Numbers of training participants have increased annually. New goal added in 2005.
Percent of child development homes that make improvement in 2 areas of FDCRS	4Cs Child Care Resource & Referral	2004 100%	2005 95%	2006 100%	NA	100% of providers will make improvements in 2 or more areas	This indicator was added during FY04.
Percent of kindergarten students who attended preschool	School districts in Johnson County (Clear Creek Amana, Iowa City, Lone Tree, Solon) 1990 & 2000 Census	1990 56.5% county 00-01 LT 67%	2000 52.8% county 02-03 LT 85%	03-04 Combined 76.8% ICCSD 75.1 LT 77.5 Solon 87.5	04-05 ICCSD 75 LT 82 2005-2006 Combined 82% ICCSD 81% (757/935) LT 80% from LEP (24/30) Solon 97% (84/87) Clear Creek Amana not provided	All areas will have 75% of kindergarteners with preschool experience by 2005.	Lone Tree attendance has increased significantly, especially since implementing Empowerment scholarships in FY03 (02-03 school year). Difficulty getting numbers from other districts.

**SECTION IV – Community-Wide Indicators – CALCULATE ON THE TOTAL NUMBER OF 0-5 POPULATION IN THE CEA.
CONTINUED**

Identify the Community Empowerment Area Indicators	Identify Source of data for each Indicator	Baseline Data (date & numerical value) *	Sub-Subsequent Year's Data (Trend Line)* Identify Year			Goal (numerical value & projected timeline)	Progress Update (Analysis)
Percent of children who maintain or gain protective factors (DECA)	Early education environments	FY2004 91.2%	2005 86.11%	2006 83%	NA	95% of children ages 2-5 will gain or maintain protective factors	This indicator was added during FY04. So far, only 8 early education programs in Johnson County are utilizing the DECA.
Number of regulated child care programs	Johnson County Social Services and 4Cs Child Care Resource & Referral	2001 Homes 399	2002 4Cs non-reg 28 2003 Homes 224	2004 191 homes 87 centers	2005 181 homes 88 centers 2006 6 preschools, 84 centers, 176 registered homes 33 listed w/4Cs	Increase to 288 by 2008.	This indicator was added during FY04. Also during FY04 DHS changed rules regarding home registration.
Number of regulated child care slots	Johnson County Social Services and 4Cs Child Care Resource & Referral	2001 Licensed 1,403 Registered 761 Total 2,164	2002 Total Licensed & Registered 3,932 2003 Licensed 4,289 Registered 1,800 Total 6,089	2004 Licensed 4,221 Registered 1,002 (or 1,528) Total 5,223 or 5,749	2005 Licensed 4,433 Registered 1,448 Total 5,881 2006 Licensed 4,743 Registered 1,252 (listed w/4Cs 1,076) Total 5,995	Increase to 2,275 (5%) by 2003. Updated goal to increase to 6,395 by 2008.	There was some decrease during FY04 perhaps due to new DHS rules regarding home registration.

*** If actual data is not available, please insert NA and provide an explanation in the Progress Update column.**

SECTION V – Collaborative Efforts

Definition adopted by Iowa Empowerment Board: Collaboration involves parties who see different aspects of a problem. They engage in a process through which they constructively explore their differences and search for (and implement) solutions that go beyond their own limited vision of what is possible. (Gray, 1989). Relationships evolve toward commitment to the common mission, comprehensive communication and planning, pooled resources and shared risks and products. Authority is vested in the collaborative, rather than in individuals or an individual agency.

Johnson County Early Learning Initiative (JCELI)

The Johnson County Early Learning Initiative (JCELI) is the result of a partnership between Neighborhood Centers of Johnson County (NCJC) and Johnson County Empowerment in applying for a federal Early Learning Opportunities Act (ELOA) grant. NCJC identified the availability of the grant and has the organizational capacity to implement the needed programs, but the applicant for the ELOA grant must be a designated local body of government. This helped to create the partnership where Johnson County Empowerment made the official application and is the grantee, while NCJC is the fiscal agent and provides implementation of the plan.

The JCELI grant application was modeled after needs identified within the Empowerment area and services currently provided with Empowerment funding. Essentially, the JCELI program expands many of the services current in place under Empowerment funding.

The JCELI program consists of 5 main components:

1. Family Support home visitation
2. Yearn To Learn community education
3. Ready To Read First Books family education
4. Parent Education playgroups
5. Preschoolers Reaching their Educational Potential (PREP) kindergarten preparation preschool
6. Early Intervention Specialist: case management and consultation to address the needs of children with behavioral issues, developmental delays, language needs, and other learning issues at home and in the classroom
7. University of Iowa Mobile Pediatric Health Clinics
8. Early Educator training: training, curriculum and support to home-based and center-based child care providers

Each program component was collaborative in nature and the program served many families. **Results** include:

1. Family Support home visitation supplemented the existing Empowerment Family Support Home Visitation program; 56 families received 603 home visits
2. Yearn to Learn included Make & Take Story Box events and collaboration with the Iowa City Public Library and the Iowa City Community School District; 20 events were attended by a total of 518 adults and children
3. Ready to Read First Books family education was a collaboration with Iowa Public Television's Family Books program; 34 events were attended by a total of 344 families

4. Parent Education playgroups included Play Together Learn Together Play Groups; 12 events were offered with over 75 participants. Collaboration was with other NCJC programs for families and the concept expanded availability of the type of existing programming offered through Iowa City Community School District and United Action for Youth.
5. Preschoolers Reaching their Educational Potential (PREP) collaboration with Iowa City Community School District served 12 children all with at least one developmental concern and 10 of whom showed delay concerns in two or more domains; 7 from families in which at least one parent self-identified a family history of mental illness; 6 received speech and language therapy; 2 had impaired hearing; 4 were English Language Learners; 3 required immediate behavior intervention plans; 2 were in foster care; all received ASQ, ASQ:SE, and DECA in fall – supports and learning activities were planned to match the needs of individual children;
By the end of this grant reporting period:
 - All children have made developmental gains
 - 1 child received an IEP and was placed in an Early Childhood Special Education Program
 - All 4 English language Learners scored in the ‘typically developing’ range for communication skills on the ASQ
 - 5 of the 6 children who received SLP services improved to the point of not requiring SLP services in kindergarten
 - 1 child was receiving play therapy and in the process of being diagnosed for ADHD
 - In the fall, 7 children scored in the ‘concern’ range for social emotional development or behavior problems in the fall, 4 scored in the concern range in the spring
 - 2 children have been identified to receive intensive behavioral supports in kindergarten
6. Early Intervention Specialist was funded with matching funds from Johnson County Empowerment; a total of 133 children were identified who required additional support to be successful learners; supports ranged from mild interventions and support to intense, individual remediation and service plans such as
 - Placement in daycare and education settings
 - Hearing evaluations and therapy
 - Speech therapy
 - Pediatric specialist referral for growth and nutrition concerns
 - IFSP/IEP
7. University of Iowa Mobile Pediatric Health Clinics were completed in collaboration with the University of Iowa College of Medicine; 26 clinics were offered (12 during October-April, serving 82 adults and children)
8. Early Educator training included Ages & Stages Questionnaires and Ages & Stages: Social-Emotional trainings facilitated by Grant Wood Area Education Agency staff; 8 trainings had 69 participants

Starting Smart Initiative

United Way of Johnson County (UWJC), Neighborhood Centers of Johnson County (NCJC), Iowa City Community School District (ICCSA), 4Cs Child Care Resource & Referral, Grant Wood Area Education Agency (GWAEA), and Johnson County Empowerment (JCE) have collaborated on the Starting Smart Initiative. This initiative is modeled after the United Way Success By 6 programs.

Coordination and Planning

The Coordination and Planning component of Success By 6 has furthered the goal of Empowerment for a true Community Plan for Early Childhood. This process has included reviewing the current Empowerment Community Plan to be sure that the plan will fit all partners and can be used as a county-wide plan for early childhood. United Way has provided expert consultation and facilitation, while other partners provide expertise in the area of early childhood best practices and community needs.

Public Awareness & Parent Education

The Public Awareness & Parent Education component of Starting Smart addresses one of the Empowerment goals that until now has received little attention, due to lack of funding. All partners worked together to identify a common message. United Way provided a marketing/communications consultant and staff support in developing and disseminating the common message. Activities have included:

***Starting Smart/Pre-K Now Press Event** – On March 31, 2006, a press event was held to highlight the importance of early childhood in all areas of our community. The event was moderated by Connie Benton-Wolfe, Executive Director of United Way. Panelists included Representative Ro Foege, Chris Carman (Linn County Child Development Center and Iowa Empowerment Board), Dr. George Phillips (pediatrician, Children’s Hospital of Iowa), Dr. Lane Plugge (Superintendent, Iowa City Community Schools). The press event resulted in two newspaper articles (Iowa City Press Citizen March 31 and Cedar Rapids-Iowa City Gazette April 1)

***Dottie Ray morning radio program** - Multi-agency (UWJC, ICCSD, Iowa Children’s Museum, JCE) participation to raise awareness for the Family Event and early childhood in general

***Family Event** – Held at the Iowa Children’s Museum, the event featured information, displays, and activities from local resources, local talent demonstrations, and a presentation on early brain development by Dr. Lise Eliot, Assistance Professor of Neuroscience at The Rosalind Franklin University of Medicine & Science/The Chicago Medical School and author of *What’s Going On in There? How the Brain and Mind Develop in the First Five Years of Life*. There were approximately **260 participants and Empowerment distributed 114 children’s books.**

***Starting Smart Newspaper Insert** – A special insert was included in the Iowa City Press Citizen regarding the importance of early childhood. The insert include a letter from the Governor and First Lady, 7 Reasons Johnson County Needs to Invest in Early Childhood, and a “What can you do?” section.

***CEO and Community Leaders Breakfast** – A morning event that featured convener Ron Reed, CEO of Mercy Hospital Iowa City, and Dr. Lane Plugge, Superintendent of the Iowa City Community School District. The featured speaker was Rob Grunewald, Associate Economist from the Federal Reserve Bank of Minneapolis. Mr. Grunewald discussed his acclaimed research done with Arthur Rolnick on early childhood investments. There were **59 attendees** at the event. Participants were provided with a survey to return that included ways in which they would be willing to support early childhood within their organizations and communities. This

resulted in 25 responses from attendees (42%). Of those responding, **68%** were willing to distribute information about quality child care options to their employees, **52%** were willing to evaluate offering Child Care Spending Accounts as a benefit option to their employees, and **48%** were be willing to contribute to a special purpose endowment to fund existing Early Childhood Programs supported by United Way of Johnson County.

SECTION VI – Performance Measures: Community Empowerment Early Childhood Funds

- Input** - what has been invested in financial and non-financial resources? (dollars invested, number of staff, etc)
- Output** - what was produced or changed as an effect of the effort put forth? (number served or trained, number of events, number meeting program outcome, etc)
- Quality** - How qualified and efficiently was the activity or service delivered? (percent of qualified staff, percent of customers satisfied, cost or rate per unit, ratio of staff to children, etc)
- Outcome** - What was the change in conditions for the people served? (percent meeting the outcome, percent gaining knowledge, percent making change in condition, etc)

All columns should have quantitative or numerical data.

SECTION VI – Performance Measures: Community Empowerment Early Childhood Funds

Early Childhood Services Provided (Coincide w/ Budget Line Items)	How Much Was Invested? (Input Measures)	How Much Was Done or Produced? (Output Measures)	How Well Did We Do It? (Quality/ Efficiency Measures)	What Was the Change In Conditions for Those We Served? (Outcome Measures)
<p>Capacity Building /Access to Child Care or Preschools</p> <p>Home Ties Emergency Child Care</p> <p>ELL/GED childcare support</p>	<p>\$62,648 Empowerment</p> <p>\$75,000 Johnson County</p> <p>\$35,979 SCCA</p> <p>\$11,876 CACFP</p> <p>\$24,613.76 other</p>	<p>108 children from 89 families were provided no-cost emergency child care while parents searched for employment or housing</p> <p>42 children participated in NAEYC accredited childcare while their parents attended English Language Learners (ELL) or GED classes</p>	<p>51 children were screened with the Ages & Stages Questionnaires resulting in 7 referrals to Grant Wood AEA and 5 children receiving services for a delay or concern</p>	<p>75% (6/8) of children gained Protective Factors as measured on DECA</p> <p>100% of families participated in continuing education, employment, or housing search</p>
<p>Quality Improvement Support/ Incentives</p>	<p>See School Ready Funds Professional Development</p>	<p>NA</p>	<p>NA</p>	<p>NA</p>
<p>Extended Hours/ Infant Care</p> <p>NCJC TXX/PJ Wraparound</p>	<p>\$22,901.50 Empowerment</p> <p>\$25,137 SCCA and Promise Jobs</p> <p>\$2,573 other</p>	<p>32 children utilized wraparound funding in NAEYC accredited classrooms</p>	<p>28 children were screened with the Ages & Stages Questionnaires resulting in 7 referrals to Early Access and 2 children received services for a delay or concern</p>	<p>7 children were assessed twice with the DECA</p> <p>57% showed improvement in Total Protective Factors</p>

**SECTION VI—Performance Measures: Community Empowerment Early Childhood Funds—
CONTINUED**

Early Childhood Services Provided (Coincide w/ Budget Line Items)	How Much Was Invested? (Input Measures)	How Much Was Done or Produced? (Output Measures)	How Well Did We Do It? (Quality/ Efficiency Measures)	What Was the Change In Conditions for Those We Served? (Outcome Measures)
Home Child Care Consultant	\$11,696.03 Empowerment	135 visits to child development homes	78% of homes listed with CCR&R are registered with DHS	Of participating child development homes: 100% made gains in at least 2 areas of the Family Day Care Rating Scale
Provider Training /Professional Development/ Materials	\$20,024.24 Empowerment \$15,000 Univ. of Iowa \$7,980.86 Regional CCR&R \$22,237 class fees \$1,400 donations	14 providers able to attend higher level training 1,111 home providers attended workshops	93% improved professionalism (4C) 99% Presenter effectiveness	1 provider who accessed Training Stipends decided to return to school for her early education endorsement 93% know more about how children grow and develop 100% respond to a child's behavior based on that child's development 100% program is more individualized to meet the needs of every child 100% have a broader range of activities 100% know more ways to stimulate brain development 93% are more likely to participate in classes and continuing education 93% consider themselves to be a child care professional
Other	\$34,977.25 Empowerment	-Facilitated workshops for early educators in the use of the Ages & Stages Questionnaires (ASQ) and Ages & Stages: Social-Emotional (ASQ:SE), and in the current Quality Initiatives -Attended the Healthy Sexual Development Training	About 24 early educators received training in the ASQ and ASQ:SE for implementation in their program About 40 early educators received information about local quality initiatives (IQPPS, QRS, FDCRS, training stipends)	100% of ASQ & ASQ:SE participants will encourage children to try new activities to increase their skills Increased awareness of local quality initiatives Increased collaboration in community planning (see Section V Collaborative Efforts)

SECTION VII – Performance Measures: Community Empowerment School Ready funds (Other than required measures)

School Ready Services Provided (Coincide w/ Budget Line Items)	How Much Was Invested? (Input Measures)	How Much Was Done or Produced? (Output Measures)	How Well Did We Do It? (Quality/ Efficiency Measures)	What Was the Change In Conditions for Those We Served? (Outcome Measures)
<p>Parent Education and Family Support & Networking</p> <p><u>Programs:</u> -UAY Rural Parenting -UAY PNP Home Visiting -UAY Teen Parent Support -HACAP Family Education -MECCA Parenting -MECCA Child Wellness -The Incredible Years -Parenting Well When You're Depressed -NCJC Mental Health -Hills Family Books -North Liberty Play Groups</p>	<p>\$98,751.52 Empowerment</p> <p>Other:</p> <p>\$3,971.94 Handicare</p> <p>\$6,714.84 MECCA</p> <p>\$1,151.19 NCJC</p> <p>\$42,585.15 UAY</p> <p>\$9,333 ICCSD</p> <p>\$1,780 Iowa Public Television</p>	<p>One 6-session Incredible Years series</p> <p>Four 8-session series of Partners in Parenting</p> <p>Three 5-session Parent Skills workshops</p> <p>One 8-session Parenting Well When You're Depressed</p> <p>243 PNP home health visits to pregnant and parenting teens</p> <p>8 presentations to home visitors and early educators</p> <p>31 family education sessions</p> <p>471 duplicated support group contacts with teen parents</p> <p>8 PlayGroups</p> <p>9 Family Book Groups</p>	<p>Cost per child averages \$51 per duplicated child and \$380 per unduplicated child</p> <p>Cost per visit averages \$53 for home visits</p> <p>Cost per family averages \$69 per duplicated family and \$288 per unduplicated family</p> <p>Cost per event averages \$319 for group events</p> <p>Presenter effectiveness was rated with 99% satisfaction in three areas</p>	<p>91% of teen home health participants delivered a healthy birth weight baby</p> <p>2% of participating teens had a subsequent birth</p> <p>100% of participating PNP home visiting children were up to date on immunizations, had health insurance, and had a primary health care provider</p> <p>Outcomes reported by participants:</p> <p>100% know more about how children grow and develop 100% are more realistic about what to expect of their child at this age 100% are more likely to use positive discipline with their child 100% know more ways to help their child calm him/herself when upset 100% know more ways to prevent behavior problems before they happen 100% will use class activities at home 100% know more about how children learn to read 100% feel that reading to their child is very important 100% know more ways to improve their child's early and pre-reading skills 100% are more likely to have their child immunized on time</p>

SECTION VII – Performance Measures: Community Empowerment School Ready funds (Other than required measures) - CONTINUED

School Ready Services Provided (Coincide w/ Budget Line Items)	How Much Was Invested? (Input Measures)	How Much Was Done or Produced? (Output Measures)	How Well Did We Do It? (Quality/ Efficiency Measures)	What Was the Change In Conditions for Those We Served? (Outcome Measures)
Continue Care	<p>\$42,564.45 Empowerment</p> <p>\$6,262 Johnson County Social Services</p>	<p>55 children were able to remain in consistent care in spite of funding challenges</p>	<p>15 child care centers and 8 child development homes participated in the program</p> <p>100% of programs would participate again</p>	<p>78% of child participants remained in their current care after Continue Care funding ended</p> <p>69% of child participants remained with the same care provider 3 months after funding ended</p>
Early Interventionist (EI)	<p>\$8,798 Empowerment</p> <p>\$8,798 Early Learning Opportunities Act Grant</p>	<p>153 children received interventions individually, in small groups, and in whole-group interventions</p> <p>1,465 contacts were made</p>	<p>Completed ASQ, ASQ:SE and DECA on all participating children. Designed and implemented interventions and data collection procedures (required by AEA before AEA will begin interventions) with the children referred to AEA for further services. Conducted coordinated meetings with NCJC Childcare Coordinators, Teachers, and AEA staff to review assessments, behavior plans, and data collection procedures.</p>	<p>15 children were referred to AEA for further testing/services</p> <p>Met bi-monthly with AEA staff to review IEPs, progress notes, and intervention plans. Then met with teaching staff and parents to link parents to the services.</p>
Children’s Health Insurance Outreach	<p>\$0 Empowerment grant</p> <p>\$7,905.07 Medicaid Administrative Claiming</p> <p>\$7,999.88 Public Health hawk-i outreach</p> <p>(this program is included in the Empowerment budget and has been funded in the past, though it was not necessary to utilize Empowerment dollars this year)</p>	<p>52 families received individualized assistance in applying for hawk-i and/or Medicaid</p>	<p>45% of enrollment goal has been reached (330/729) in April 2006. This is a dramatic increase above 9% (94/1075) of enrollment goal in 2000.</p>	<p>31 additional children were enrolled in hawk-i and Medicaid</p>

SECTION VII – Performance Measures: Community Empowerment School Ready funds (Other than required measures) - CONTINUED

School Ready Services Provided (Coincide w/ Budget Line Items)	How Much Was Invested? (Input Measures)	How Much Was Done or Produced? (Output Measures)	How Well Did We Do It? (Quality/ Efficiency Measures)	What Was the Change In Conditions for Those We Served? (Outcome Measures)
<p>Early Childhood Specialist</p>	<p>\$8,078.09 Empowerment</p>	<p>2 new home visitor training sessions 1 parent presentation to Nest participants 2 presentations to HACAP parents</p> <p>Participated in 6 home visitation site visits and 9 home visits.</p> <p>Publication of The More You Know (TMYK), a compilation of some of the child/family/parenting/ adult education classes happening in Johnson County. (See www.jcempowerment.org or www.pcajc.org then click on Programs then The More You Know)</p>	<p>Provided training to 3 new home visitation counselors Provided parenting information to 32 Nest Participants and 20 HACAP parents. Coordinated follow-up substance abuse prevention/intervention for 21 community based service providers.</p> <p>100% positive ratings of presenter effectiveness</p> <p>TMYK is distributed quarterly to 56 community contacts and contains an average of 16 events per quarter.</p>	<p>Of parent participants: 100% gained information about child development 100% gained information about guidance & development 100% gained information about parenting styles and techniques 100% gained information about early reading</p> <p>Increased collaboration in community planning (see Section V Collaborative Efforts)</p>

Home Visitation Performance Measures (use one row for each funded program) – Refer to Tool FF

Name of Home Visitation Program (Coincide w/ Budget Line Items)	How Much Was Invested? (Input Measures)	How Much Was Done or Produced? (Output Measures)	How Well Did We Do It? (Quality/ Efficiency Measures)	What Was the Change In Conditions for Those We Served? (Outcome Measures)
<p>Empowerment Family Support Program</p> <p>(includes Bavolek Nurturing Program, Healthy Families San Angelo, Parents As Teachers, and Partners For A Healthy Baby curricula)</p>	<p>Amount expended: \$238,160.50 Empowerment</p>	<p>Number of children participating in the family support program utilizing a home visiting service delivery model (Unduplicated): 286</p> <p>Number of pregnant women participating in the family support program utilizing a home visitation service delivery model (Unduplicated): 52</p> <p>Number of families participating in the family support program utilizing a home visitation service delivery model (Unduplicated): 214</p> <p>Number of face to face visits completed: 3,176</p>	<p>Percent of children, 0 –3 years old, while enrolled in the program, who are referred for Early Access services: 13%</p> <p>Overall, participants reported high rates of satisfaction with Counselor effectiveness (100%)</p> <p>100% said the family support worker talked at a level they could understand</p> <p>100% said the family support worker was very knowledgeable</p> <p>100% said they felt comfortable asking the worker any questions they had</p> <p>342 Ages & Stages Questionnaires were completed on 231 children; of those children, 37 (16%) were referred to the AEA for further evaluation and of those, 24 (65%) received services for a delay</p> <p>119 Ages & Stages: Social-Emotional Questionnaires were completed on 114 children; of those children, 24 (21%) were referred to the AEA for further evaluation and of those, 19 (79%) received services for a delay or concern</p>	<p>Overall, participants reported increases in:</p> <p>Parent-child interactions (99%)</p> <p>99% have more ideas about how to discipline their child</p> <p>99% are more likely to use positive discipline with their child</p> <p>98% use discipline based on their child's development</p> <p>99% know more what to expect of their child at his/her age</p> <p>100% feel they are more realistic about what to expect of their child at this age</p> <p>100% are more likely to sit down and read to their child</p> <p>100% encourage their child to try new activities to increase his/her skills</p> <p>98% are more likely to follow a schedule with their child</p> <p>Building social support & decreasing stress (98%)</p> <p>99% have more emotional energy to give to their child</p> <p>97% feel less stressed in caring for their child</p> <p>99% feel they have more emotional support from others</p> <p>99% are more confident about their parenting skills</p> <p>Identifying needed resources (99%)</p> <p>99% know where to turn for help when they need it</p> <p>99% have discovered new resources in the community to use</p>

Preschool Programming (Tuition) Support for Low-Income Families - Performance Measures - Refer to Tool CC (B)

Programs Funded	How Much Was Invested? (Input Measures)	How Much Was Done or Produced? (Output Measures)	How Well Did We Do It? (Quality/ Efficiency Measures)	What Was the Change In Conditions for Those We Served? (Outcome Measures)
<p>Number of funded Programs meeting the following standards:</p> <p>NAEYC Accreditation: 5</p> <p>Shared Visions: 2</p> <p>Head Start: 1</p> <p>ECER average score of 5 (with no subscale score under 2): 0</p> <p>Completed QPPS process: 0</p> <p>In process for completing any of the above quality standards: 9 in QPPS process</p> <p>Meeting comparable standard (also identify standard): 0</p> <p>Total number of programs participating: 12 classrooms</p> <p>INCLUDES: Hills & Twain Shared Visions Mann Scholarships Little Engine Preschool NCJC Head Start PREP School Ready Scholarships</p>	<p>Amount expended: \$114,902.31 Empowerment</p> <p>Other \$1,665 parent tuition (LEP) \$107,100 parent tuition (ICCSO) \$25,137 Head Start \$2,573 Other \$94,635 Shared Visions \$35,944 ICCSD \$3,131 Johnson County Social Services \$6,865 NCJC</p> <p>Educational Level of Head Teacher(s) (Total number of each):</p> <p>GED: 0 High School Diploma: 3 Child Development Associate: 1 AA Degree in EC or child development: 1 AA Degree in related field: 0 BA/BS in EC or child development: 4 BA/BS in related field: 3 Post Graduate Degree: 3</p> <p>Number of funded programs utilizing a Child Care Nursing consultant for technical assistance: 3</p> <p>Curriculum(s) used by funded programs: Breakthrough to Literacy Center based Creative curriculum Handwriting Without Tears Hugs and Tugs Incredible Years Learning centers Multiple Intelligences NAEYC Standards Project Approach Project Construct Second Step Theme based</p>	<p>For Children Supported with these funds:</p> <p>Total Number of children (Unduplicated): 84</p> <p>Number of Children by age (Unduplicated): 3 Year Olds: 9 4 Year Olds: 60 5 Year Olds: 15</p> <p>Number of Children by Gender (Unduplicated): Female: 36 Male: 48</p> <p>Number of Children by Race (Unduplicated) White: 53 Black/African American: 24 American Indian: 0 Asian: 1 Native Hawaiian/Pacific Islander: 0 More than one race reported: 2 Other/Unknown: 4</p> <p>Number of Children by ethnicity (Unduplicated): Hispanic/Latino: 25 Not Hispanic/Latino: 59</p> <p>Number of Children with health insurance: 64</p> <p>Number of Children with age appropriate skills: 68</p>	<p>For Children Supported with these funds:</p> <p>Percent of Children with health insurance: 76%</p> <p>When we separate out children from a summer preschool program targeting very high risk children, our percentages become:</p> <p>Percent of children with health insurance: General: 86% (62/72) PREP: 17% (2/12)</p>	<p>For Children Supported with these funds:</p> <p>Percent of Children demonstrating age appropriate skills: 81%</p> <p>When we separate out children from a summer preschool program targeting very high risk children, our percentages become:</p> <p>Percent of children demonstrating age appropriate skills: General: 88% (63/72) PREP: 42% (5/12)</p> <p>(Identify the assessment tool(s) used to determine the children's development) Ages & Stages Questionnaires (ASQ), Devereux Early Childhood Assessment (DECA), Ages & Stages: Social-Emotional most programs did not identify which tool they used</p> <p>93% of children assessed with DECA both Fall and Spring gained or maintained Total Protective Factors</p> <p>50% (6/12) of children assessed with ASQ:SE were referred for additional evaluation/services (PREP program only)</p>

Collaborative Professional Development – Performance Measures – Refer to tool DD (B)

Note: Required measures to be reported are in **bold**.

Collaborators	How Much Was Invested? (Input Measures)	How Much Was Done or Produced? (Output Measures)	How Well Did We Do It? (Quality/ Efficiency Measures)	What Was the Change In Conditions for Those We Served? (Outcome Measures)
<p>Please list the collaborative partners involved in the professional Development Activities and briefly describe the activities.</p> <p>Community Empowerment, 4Cs Child Care Resource & Referral, Grant Wood AEA, and Kirkwood Community College participated in planning.</p> <p>Programs funded:</p> <p>Iowa's Quality Preschool Program Standards</p> <p>Every Child Reads</p> <p>QRS Support</p>	<p>Amount Expended: \$22,835.04 Empowerment</p> <p>2 Every Child Reads workshop series</p> <p>Support to 8 centers for QPPS, including 3 on-site awareness sessions and support for 5 programs to complete the self-assessment process and develop a Quality Improvement Plan</p> <p>2 QRS workshops; 18 QRS technical visits</p> <p>5 CDA workshops; 5 CDA visits, enrolling 5 providers in CDA program</p> <p>2 FDCRS workshops; 10 FDCRS visits conducting 9 FDCRS assessments of 5 providers</p>	<p>Total number of participants (83) by:</p> <p>Number of Administrators/Directors: 1</p> <p>Number of Directors/Teachers: 25</p> <p>Number of Teachers/Early Childhood Providers: 53</p> <p>Number of Assistant Teachers: 4</p> <p>Number of participants working toward CDA: 5</p> <p><u>Report as applicable:</u> Total number of credits earned: Average number of credits earned by participants: Number of participants working toward associate degree: Number of participants working toward bachelor degree: Total number of participant hours logged: AEA + QRS Total number of CEU's earned:</p>	<p>Percent of all participants completing coursework by:</p> <p>Percent of Administrators/Directors: 100%</p> <p>Percent of Teachers/Early Childhood Providers: 98%</p> <p>Percent of Assistant Teachers: 100%</p> <p>Average cost per participant: \$275.12</p> <p><u>Report as applicable:</u></p> <p>Average cost per credit hour: Percent of participants completing associate degree: Percent of participants completing bachelor degree:</p>	<p>Percent of participants who report incorporating learning into policy or practice: 100%</p> <p>Percent of participants who made gains in at least 2 areas of the Family Day Care Rating Scale (FDCRS): 100%</p>

SECTION VIII –Other Community Investment and Support

Identify and briefly describe other funding or support (as appropriate) the community empowerment area has been successful in obtaining and applying toward the community plan. *Identify funds (actual cash amount) that come directly to and flow through the community empowerment area to support the community plan. Identify value of in-kind as calculated according to usual and customary accounting principles (convert to cash value) that supports the community empowerment area’s community plan.*

Source	Cash Value	Source	In-Kind Cash Value
Early Learning Opportunities Act Grant		Johnson County Board of Supervisors	3,750.00
	235,076.00	Mercy Hospital Iowa City	12,045.26
<u>Already shown in Performance Measures:</u>		4Cs Community Coordinated Child Care	1,200.00
Child Care Resource & Referral Regional	7,980.86	Johnson County Council of Governments	367.50
Child & Adult Care Food Program	11,876.00	Johnson County Public Health	1,726.70
Early Learning Opportunities Act Grant	8,798.00	Community volunteers	18,698.00
Head Start funds	25,137.00	Board Chairperson	2,160.00
Johnson County for Home Ties	75,000.00		
Public Health hawk-i outreach	7,999.88	<u>Already shown in Performance Measures:</u>	
Shared Visions grants	94,635.00	Iowa Public Television Family Books Program	1,780.00
State Child Care Assistance/Promise Jobs	61,116.00	Johnson County Social Services	9,393.00
University of Iowa	15,000.00		
Additional reflected in Performance Measures	276,632.27		
TOTAL	819,251.01	TOTAL	51,120.46

A	B	C	D	E
	EARLY CHILDHOOD FUNDS UNDER EMPOWERMENT			
	Community Empowerment Area:	FY06	FY07	FY08
#				
	Revenues (Reporting Year)			
1	Current allocation for Admin. (not to exceed 5% of total award) for Reporting Year	\$8,128.00		
2	Program/Service Funds	\$154,443.00		
3	<i>Subtotal current award (Sum Lines 1 and 2)</i>	\$162,571.00	\$0.00	\$0.00
	Carry-forward from Previous Years available for current reporting year			
4	Brought Forward-Administration	\$0.00		
5	Brought Forward -- Program/Service Funds	\$3,654.78		
6	Interest (Must be used in Program and not Administration)	\$0.00		
7	<i>Subtotal carryover funds (Sum Lines 4 through 6)</i>	\$3,654.78	\$0.00	\$0.00
8	Total Available funds (Line 3 + 7)	\$166,225.78	\$0.00	\$0.00
9	Current Year Available Funds (Current Allocation plus Carry-forward) by Category			
10	Administration	\$8,128.00		
11	Program/Service Funds including Carry Forward Interest	\$158,097.78		
	Interest Earned During Fiscal Year	\$1,672.03		
12	Total Available funds by category (Sum Lines 10 + 11)	\$167,897.81	\$0.00	\$0.00
13	Expenditures (Reporting Year)			
14	Admin. Expenditures	\$8,128.00		
15	Capacity Building/Access to Child Care or Preschools	\$62,648.00		
16	Quality Improvement Support/Incentives	\$0.00		
17	Extended hours/2nd or 3rd shift care/infant care/mildly ill care	\$22,901.50		
18	Home or Center Child Care Consultants	\$11,696.03		
19	Child Care Nurse Consultants	\$0.00		
20	Provider Training/Professional Development/Materials	\$20,024.24		
21	Other Services	\$34,977.25		
22	Total Expenditures Reporting Year (Lines 14 through 21)	\$160,375.02	\$0.00	\$0.00
23	Unexpended Balance of Funds (Reporting Year)			
24	Administration	\$0.00		
25	Program/Service Funds	\$7,522.79		
26	Unexpended Balance of Funds for Reporting Year (Carry-forward to next year)	\$7,522.79	\$0.00	\$0.00
	I hereby verify that the information contained in this financial statement is true.			
	Fiscal Agent Signature	Date		
	On behalf of:			

	Community Empowerment Area:	Iowa Community Empowerment 2006 Annual Report	FY06	FY07	FY08
		Early Childhood Financial Statement			
	Name of Community Empowerment Area Represented				

Iowa Community Empowerment 2006 Annual Report -
School Ready Financial Statement

A	B	E	F	G
	SCHOOL READY FUNDS UNDER EMPOWERMENT			
Line #	Community Empowerment Area:	FY 06	FY 07	FY 08
	Revenues (Reporting Year)			
1	Current allocation for Administration (not to exceed 3% of total award; \$60,000 maximum) for Reporting Year	\$20,013.00		
2	Family Support and Parent Education	\$400,274.00		
3	Preschool Support for Low Incomes Families	\$120,082.00		
4	Professional Development Activities w/ AEA, Community Colleges	\$26,685.00		
5	Other Programs/Services	\$100,068.00		
6	<i>Subtotal current award</i>	\$667,122.00	\$0.00	\$0.00
	Carryforward from Previous Years: Available for Current Reporting Year			
7	Brought Forward - Administration	\$0.00		
8	Brought Forward - Family Support and Parent Education	\$0.00		
9	Brought Forward - Preschool Support for Low Incomes Families			
10	Brought Forward - Professional Development Activities w/ AEA, Community Colleges			
11	Brought Forward - Other Programs/Services	\$51,438.88		
12	Interest (Must be used in Program and not Administration)	\$0.00		
13	<i>Subtotal Carryforward funds</i>	\$51,438.88	\$0.00	\$0.00
14	Less Carryforward in excess of allowable (30%)			
15	Total Available funds	\$718,560.88	\$0.00	\$0.00
16	Total Available Funds for Reporting Year (Current Allocation plus Allowable Carryforward)			
17	Administration	\$20,013.00	\$0.00	\$0.00
18	Family Support and Parent Education	\$400,274.00	\$0.00	\$0.00
19	Preschool Support for Low Incomes Families	\$120,082.00	\$0.00	\$0.00
20	Professional Development Activities w/ AEA, Community Colleges	\$26,685.00	\$0.00	\$0.00
21	Other Programs/Services	\$151,506.88	\$0.00	\$0.00
22	Interest Accrued in Current Fiscal Year (Must be used in Program and not Administration)	\$14,116.01		
23	Grand Total Budget for Reporting Year	\$732,676.89	\$0.00	\$0.00
	Expenditures (Reporting Year)			
24	Administration	\$20,013.00		
25	Family Support and Parent Education	\$336,911.57		
26	Preschool Support for Low Incomes Families	\$114,902.31		
27	Professional Development Activities w/ AEA, Community Colleges	\$22,835.04		
28	Other Programs/Services includes Interest Applied	\$59,440.54		

Iowa Community Empowerment 2006 Annual Report -
School Ready Financial Statement

Line	Community Empowerment Area:	FY 06	FY 07	FY 08
29	Grand Total Expenditures for Reporting Year	\$554,102.46	\$0.00	\$0.00
	Unexpended Balance of Funds for Reporting Year (Becomes Carryforward in 1st succeeding year)			
30	Administration (not to exceed 3% of total award; \$60,000 maximum)	\$0.00	\$0.00	\$0.00
31	Family Support and Parent Education	\$63,362.43	\$0.00	\$0.00
32	Preschool Support for Low Incomes Families	\$5,179.69	\$0.00	\$0.00
33	Professional Development Activities w/ AEA, Community Colleges	\$3,849.96	\$0.00	\$0.00
34	Other Programs/Services includes Interest	\$106,182.35	\$0.00	\$0.00
	Unexpended Balance of Funds (Reporting Year)	\$178,574.43	\$0.00	\$0.00
35	Maximum Allowable Carryforward to next year	\$200,136.60	\$0.00	\$0.00
36	Overage (Reduced from second succeeding year payments: Beginning FY 08)	-\$21,562.17	\$0.00	\$0.00
	I hereby verify that the information contained in this financial statement is true.			

	Fiscal Agent Signature			
	On behalf of:			

	Name of Community Empowerment Area Represented			